

FURDU MMXXV
CONBOOK
SUBMISSION GUIDE



SPECIFICS

ILLUSTRATIONS

For this year's conbook, themed around 'Ancient Worlds,' we're seeking artwork inspired by scribes and hieroglyphs to fill our pages. We're excited to showcase your creative work in what will be a memorable souvenir. Please keep submissions PG-13 and send us your polished drawings, doodles, and any other art you'd like to share. Need some inspiration to get started? Scroll down for ideas to spark your creativity!

FRAMES

These are more traditional styles of illustration, typically including well-developed backgrounds and subjects. We encourage you to supply them in any listed dimensions

1/2
PAGE

AFTER SOMETHING ELSE?

Want to feature your advertisement or something else in our conbook? Email us at Creative@furdu.com.au!

1/4
PAGE

CREATED BY ERISDAFOXY,
INSPIRED BY SAM BRADY

THANK YOU FOR
YOUR ONGOING
SUPPORT TO HELP
MAKE THIS
HAPPEN!

SIGNATURES

Of course, we want these on every piece, but be mindful of where they are placed as they may get cut out during print!

PRINT SPECS

Please complete all work in CMYK. Try to supply all artwork in PNG or TIFF to ensure the highest print quality!

DIMENSIONS:

- Full Page: 2480px wide x 3508px high
- 1/2 page: 2480px wide by 1654px high
- 1/4 page: 1240px wide by 1654px high

Please ensure all art is completed in 300DPI.

REMEMBER:

1. Try to allow a 5mm bleed around all edges!
2. Consider the location of your signature to ensure it doesn't get cut off!

EDGE PIECES

These pieces are supplied without backgrounds and bring some more interest into the pages, similar to the 'Deep Etched' characters, but allow us to wrap them on pages!

BACKGROUND PIECES

These particular pieces allow us to use them as backgrounds to keep the book interesting and filled with creative pieces.

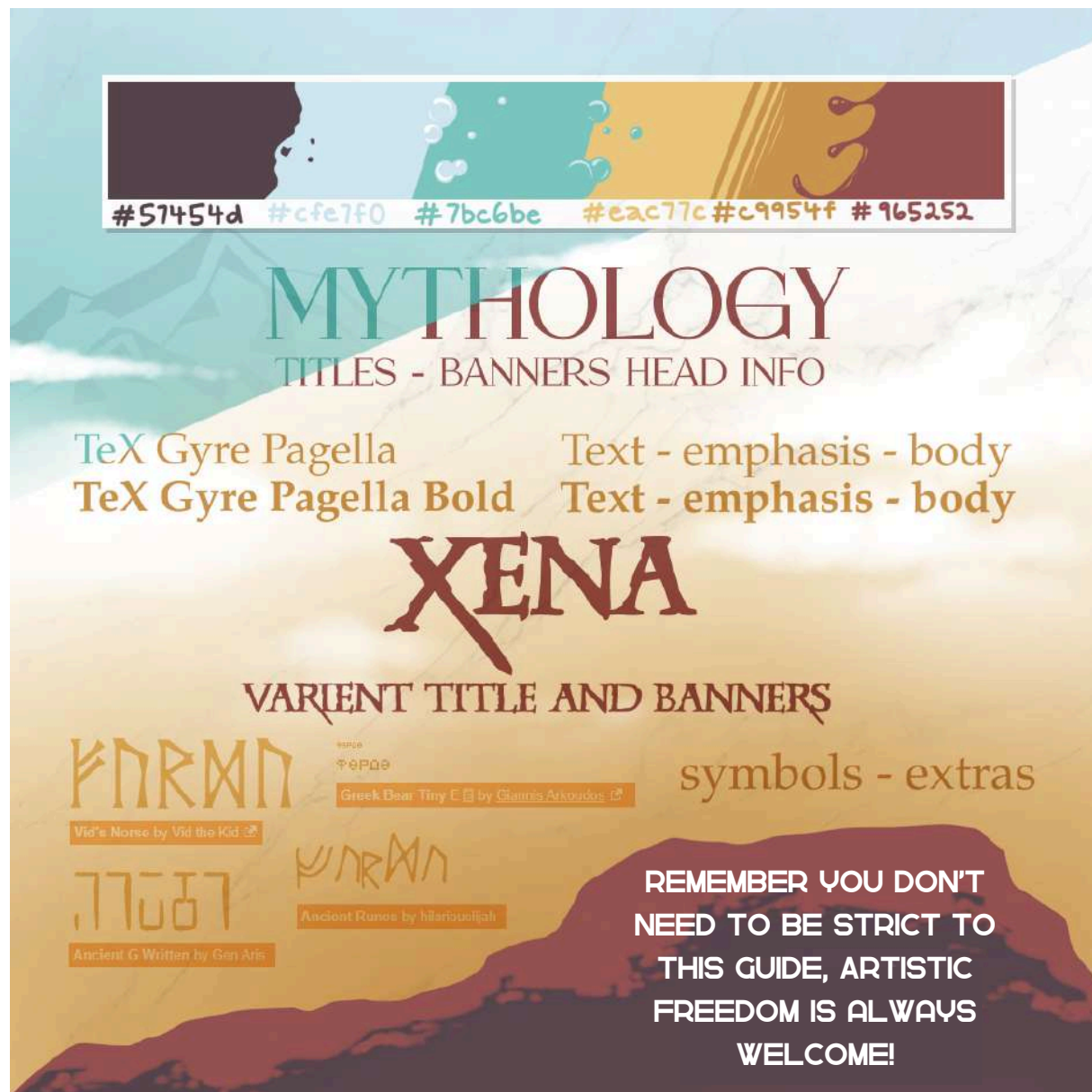
DEEP ETCHED

Cut out characters without backgrounds can be integrated around text, making them fantastic to fit all over the book on any page!

FULL PAGE
BACKGROUND



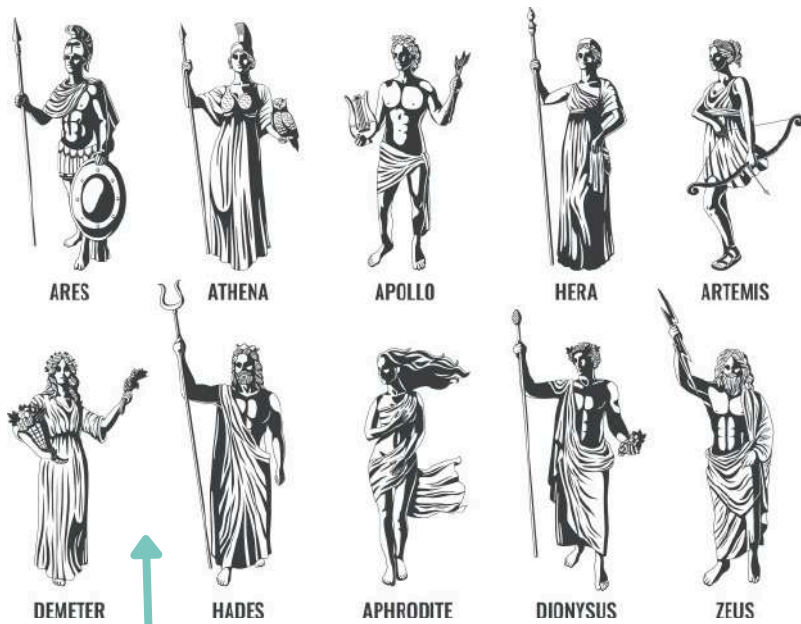
LOGOS & STYLE GUIDE



Need help deciding on A Character for your piece?

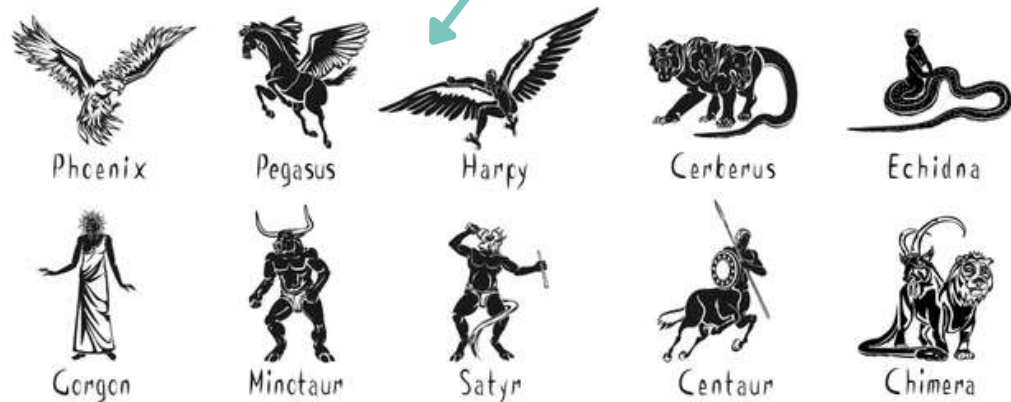
Consider using one of our Mascots, reference sheets available on the FurDU website!

INSPIRATION - GREEK

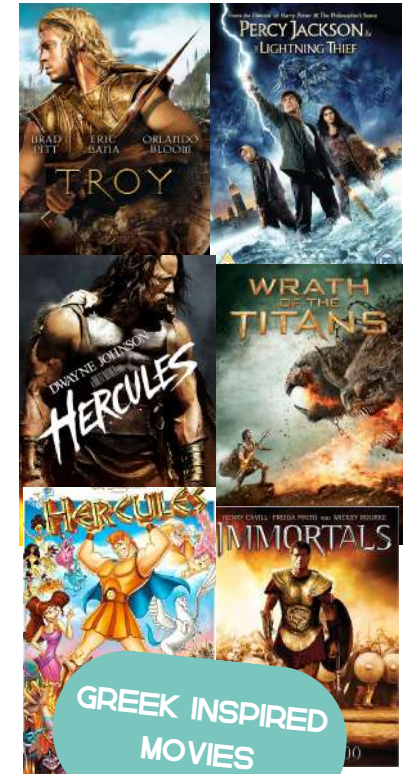


GODS
INSPIRATIONS

MONSTER
INSPIRATIONS



GREEK
PAINTINGS &
STATUES



GREEK INSPIRED
MOVIES



ARCHITECTURE
INSPIRATIONS

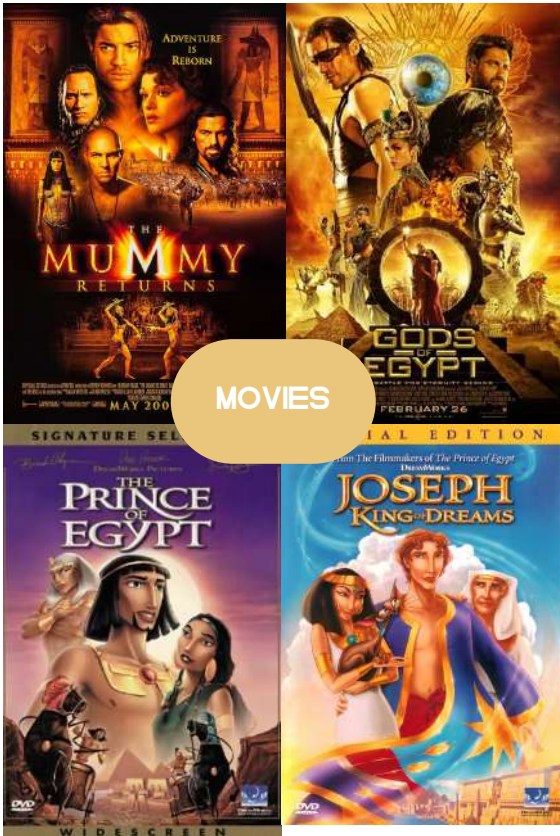
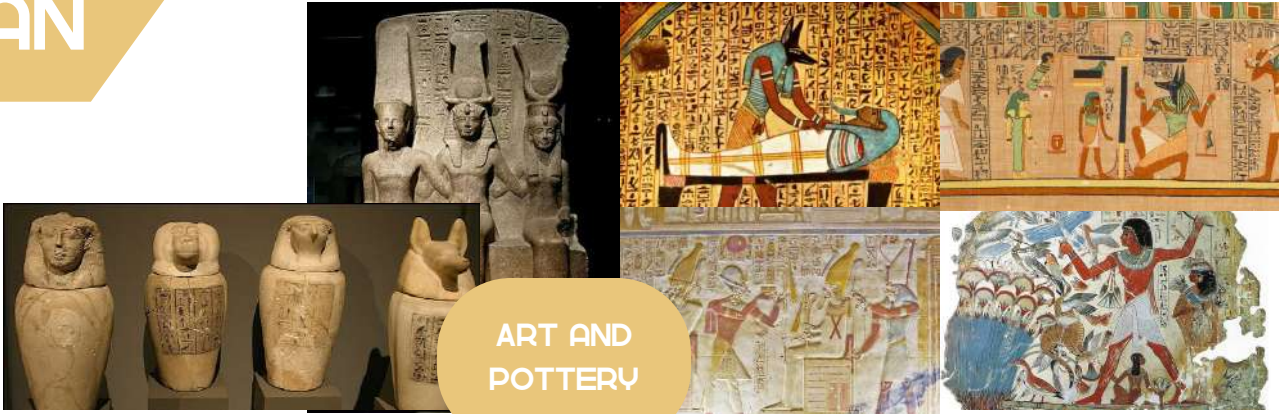


INSPIRATION - EGYPTIAN



GODS
INSPIRATION

MONSTERS
INSPIRATION



INSPIRATION - ROMAN



ART AND
POTTERY



GODS
INSPIRATION

MONSTERS
INSPIRATION



ARCHITECTURE

MOVIES

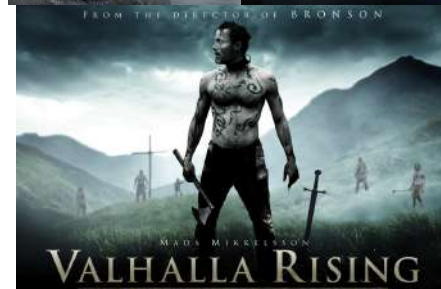
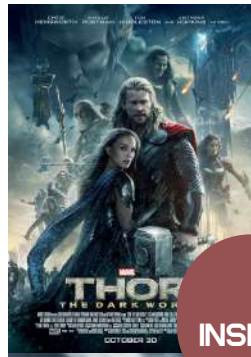
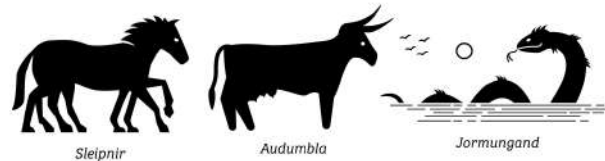


INSPIRATION - NORDIC



GODS
INSPIRATION

MONSTERS
INSPIRATION



MOVIE
INSPIRATIONS



ART AND
STONES



WORLDS AND
BUILDINGS

